

# The National Fisheries Institute INP



Research Programs

Pag. 3



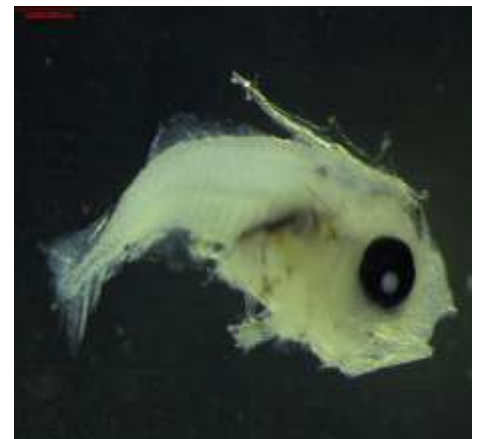
Laboratories

Pag. 5



The Squid Fishery  
Aquaculture

Pag. 4





## HISTORY

INP was created on December 5, 1960, and its main objective was fisheries research.

## OBJETIVES

To carry out scientific and technological investigations of the bio-aquatic resources, based on the knowledge of the environment and the organisms that inhabit it, in order to evaluate its potential, to diversify the production, to promote the development of the fishing activity and to achieve its optimum and rational utilization .



## Research Programs

Fisheries  
Fishing  
Technology  
Aquaculture



### Research Programs:

Small Pelagic Fisheries  
Big Pelagic Fisheries and Sharks  
Fishing gears  
Climate variability  
Plankton (Fito, Zoo, Ictio)  
Shrimp  
Concha  
Crab  
Fresh water  
Merluza \*  
Bacalao \*  
Medusa

### Research Staff

38 people:  
Master & PhD Level

Fresh Water  
Embalse Parque Lago Chongón

Biological information to determine the structure of sizes, maturity stages and commercial species (**tilapia, langosta de agua dulce, dica, Vieja azul, dama y guanchiche**).

### Demersal Fisheries

Corvina (Cachema)

Information on the biological and fishing components of the cachema in the artisanal fishing ports of Playas, Engabao and Puerto Bolívar.

Merluza (Hake)

Fishing activity of the artisanal and industrial fleet to the hake resource (***Merluccius gayi***).

## Mollusks

### The Cockle Fishery

Establish the status of (*Anadara tuberculosa* and *similis*) fishery to propose management measures.

### The Squid Fishery

To estimate the abundance of the Giant Squid (*Dosidicus gigas*) in the low, medium and high fishing seasons on the Ecuadorian coast.



## Crustaceans

### Red Crab

*Ucides Occidentalis*

To estimate parameters involved in the population and fishing dynamics of *Ucides occidentalis*



## Aquaculture

### Marine Aquaculture (Maricultura)

Marine Crop Tracking:

**Cobia** (*Rachycentron canadum*),

**Macroalgae** (*Kappaphycus alvarezii*)

**Oysters** (*Crassostrea gigas*)

### Acuicultura continental (Dulceacuícolas)

Compilation of biological aspects of Paiche (*Arapaima gigas*) from fish farms.





## Collaboration in Science - Research

### HUMAN RESOURCES:

Scientific - technical personnel with the best level of knowledge and preparation in fishing and aquaculture issues to provide quality services to the fishing and aquaculture industries.

### SCIENTIFIC PRODUCTION:

Improved and updated Fisheries-Aquaculture-Environmental Statistics  
Elaboration of Scientific Articles  
Elaboration of Thesis.  
Published scientific papers (eg different journals).  
Summaries of articles published on the basis of FAO's ASFA system.  
Development of appropriate management measures for the sustainability of fishery-aquaculture resources.

### CAPTURE OF INVESTMENT FUNDS:

Flexible mechanisms to carry out and support projects of between research institutions.

Joint Financing Program



**Mgta. Pilar Solís – Coello**  
**General Director INP**



**Nikita Gaibor Ph.D**  
**Technical Director**

## Instituto Nacional de Pesca (INP)

57 years fishing for scientific research in Ecuador.

Letamendi #102 y la Ría  
Guayaquil – Ecuador  
[www.institutopesca.gob.ec](http://www.institutopesca.gob.ec)

